

PLAT OF CRANE CREEK COUNTRY CLUB

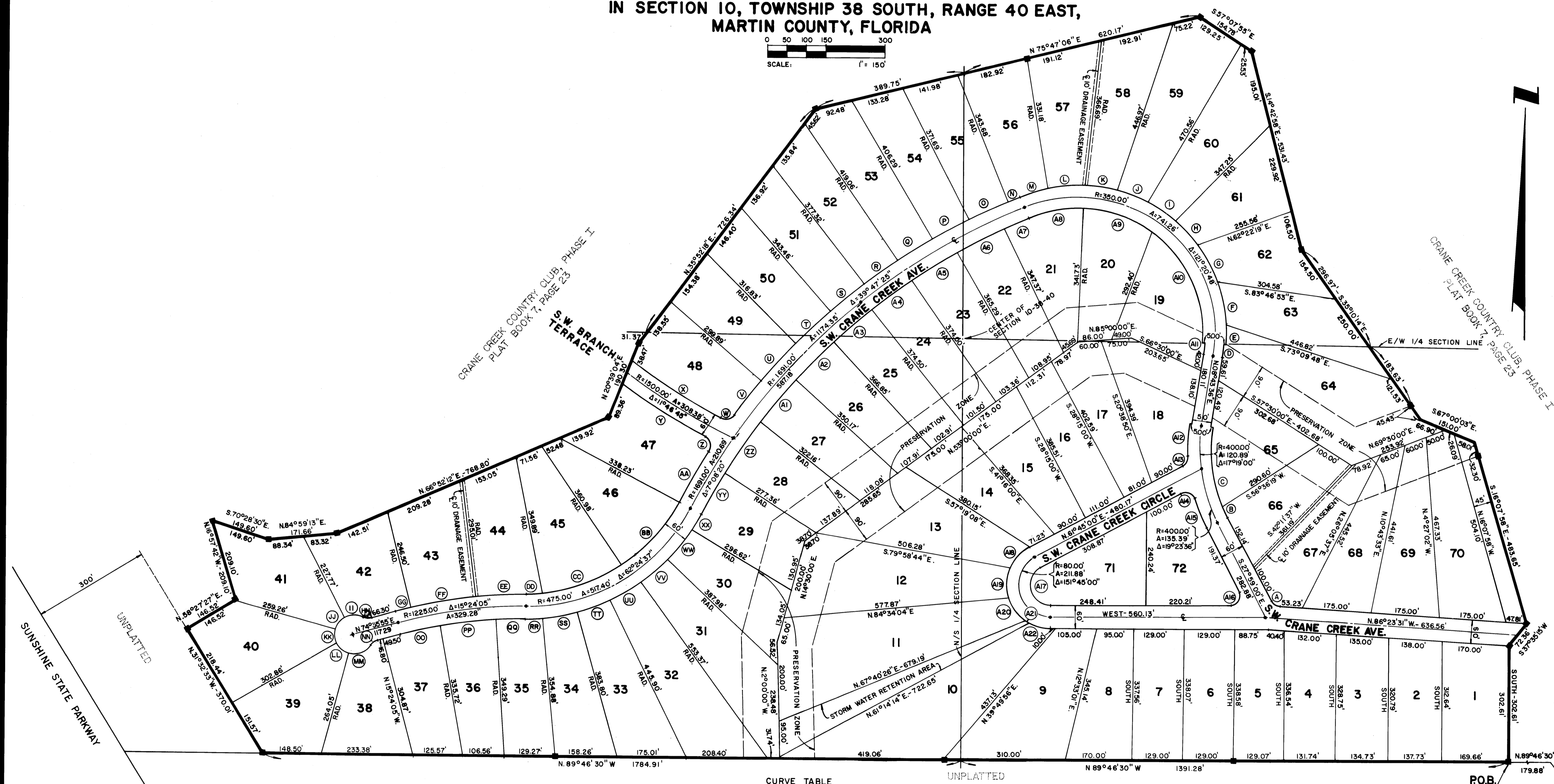
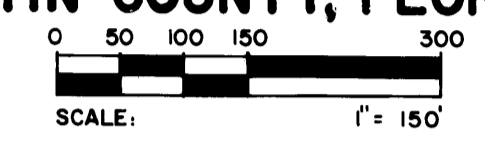
PHASE II
IN SECTION 10, TOWNSHIP 38 SOUTH, RANGE 40 EAST,
MARTIN COUNTY, FLORIDA

SHEET 2 OF 2

OCTOBER 1977

I, LOUISE V. ISAACS,
COUNTY CLERK OF MARTIN
COUNTY, FLORIDA, HEREBY
CERTIFY THAT THIS PLAT
HAS BEEN EXAMINED AND
THAT IT COMPLIES IN FORM
WITH ALL THE REQUIREMENTS
OF THE STATUTES OF FLORIDA
PERTAINING TO MAPS AND
PLATS, AND THAT THIS PLAT
HAS BEEN FILED FOR RECORD
IN PLAT BOOK 7
PAGE 28, PUBLIC
RECORDS OF MARTIN COUNTY,
FLORIDA, THIS
DAY OF _____, A.D.
1977.

LOUISE V. ISAACS, CLERK
MARTIN COUNTY, FLORIDA
BY _____
FILE NO. _____



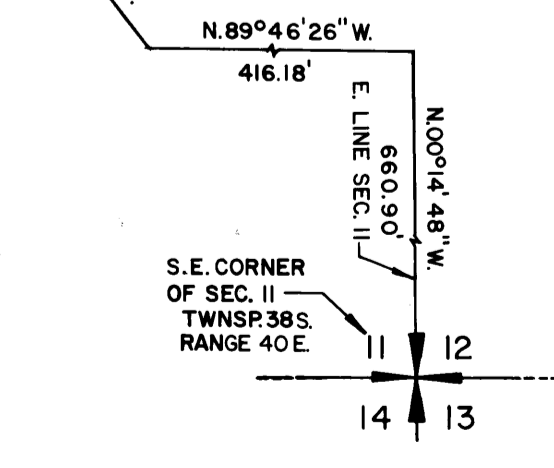
NOTE: A TEN FOOT (10') UTILITY EASEMENT SHALL
BE PROVIDED ALONG ALL FRONT LOT LINES.

BEARING BASE: BEARINGS ARE BASED ON THE EAST LINE
OF SECTION 11, TOWNSHIP 38 SOUTH,
RANGE 40 EAST, AS RECORDED ON THE
PLAT OF CRANE CREEK COUNTRY CLUB,
PHASE I, PLAT BOOK 7, PAGE 23, MARTIN
COUNTY, FLORIDA, PUBLIC RECORDS.

CURVE TABLE

Δ	R	A	Δ	R	A	Δ	R	A	Δ	R	A	Δ	R	A	
A.	58°24'31"	25.00'	25.49'	Q.	3°29'45"	1721.00'	105.00'	GG.	1°49'05"	1255.00'	39.82'	WW.	11°13'00"	505.00'	98.86'
B.	4°38'43"	370.00'	30.00'	R.	3°29'45"	1721.00'	105.00'	HH.	42°50'01"	25.00'	18.69'	XX.	5°11'37"	505.00'	45.78'
C.	32°03'52"	370.00'	207.06'	S.	3°39'10"	1721.00'	109.72'	II.	54°56'15"	50.00'	47.94'	YY.	3°43'37"	1661.00'	108.04'
D.	5°01'52"	380.00'	32.93'	T.	4°01'20"	1721.00'	120.82'	JJ.	45°50'13"	50.00'	40.00'	ZZ.	5°29'30"	1661.00'	159.20'
E.	5°27'09"	380.00'	36.16'	U.	4°20'00"	1721.00'	130.16'	KK.	46°14'01"	50.00'	40.35'	AA.	4°57'45"	1661.00'	143.86'
F.	16°35'08"	380.00'	110.00'	V.	3°43'17"	1721.00'	111.78'	LL.	45°50'13"	50.00'	40.00'	AB.	4°41'30"	1661.00'	136.01'
G.	16°35'08"	380.00'	110.00'	W.	80°33'15"	25.00'	35.15'	MM.	72°49'18"	50.00'	63.55'	AC.	4°33'30"	1661.00'	132.15'
H.	12°48'59"	380.00'	85.00'	X.	10°18'32"	1470.00'	264.49'	NN.	42°50'01"	25.00'	18.69'	AD.	4°31'15"	1661.00'	131.06'
I.	12°48'59"	380.00'	85.00'	Y.	9°05'58"	1530.00'	242.99'	OO.	4°46'05"	1195.00'	99.45'	AE.	4°34'15"	1661.00'	132.51'
J.	12°48'59"	380.00'	85.00'	Z.	95°15'48"	25.00'	41.57'	PP.	7°06'30"	1195.00'	148.26'	AF.	4°43'15"	1661.00'	132.51'
K.	12°48'59"	380.00'	85.00'	AA.	5°02'56"	1721.00'	151.65'	QQ.	3°31'30"	1195.00'	73.52'	AG.	2°32'48"	1661.00'	73.83'
L.	14°48'23"	380.00'	98.20'	BB.	28°54'37"	445.00'	224.54'	RR.	5°09'20"	505.00'	45.44'	AH.	25°31'59"	320.00'	142.60'
M.	11°37'12"	380.00'	77.07'	CC.	28°20'40"	445.00'	220.14'	SS.	10°12'40"	505.00'	90.00'	AI.	34°01'10"	320.00'	190.00'
N.	1°02'48"	1721.00'	31.44'	DD.	5°09'20"	445.00'	40.04'	TT.	10°12'40"	505.00'	90.00'	AJ.	56°45'47"	320.00'	317.02'
O.	3°40'45"	1721.00'	110.51'	EE.	5°55'54"	1255.00'	129.93'	UU.	10°12'40"	505.00'	90.00'	AK.	5°01'52"	330.00'	28.10'
P.	3°29'45"	1721.00'	105.00'	FF.	9°28'11"	1255.00'	167.60'	VV.	10°12'40"	505.00'	90.00'	AL.	12°21'13"	430.00'	92.71'

■ = PERMANENT REFERENCE MONUMENT
● = PERMANENT CONTROL POINT



LINDAHL, BROWNING & FERRARI, INC.
Consulting Engineers, Planners & Surveyors
426 INDIANTOWN ROAD JUPITER, FLORIDA 33458
951 COLORADO AVENUE STUART, FLORIDA 33494